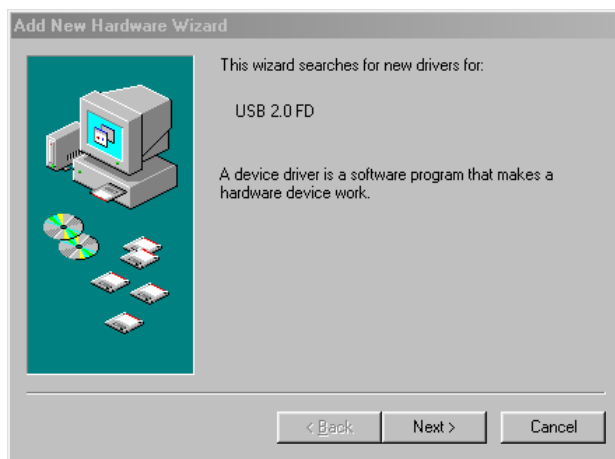


PNY ATTACHE USB  
Install Guide for Windows® 98SE

Note: No driver is required for Windows ME, 2000, or XP.

Windows 98se:

1. Extract the file « win98se\_driver », (toward the desired directory.  
For example: C:\temp\
2. Connect the PNY USB device to a USB port of your computer.
3. A window « Add new device» will appear. Click on the "**Next**" tap to start the Installation.



4. Select « Search for the best driver for your device (Recommended) » then click on the « **Next** ». Tap



5. Select « Specify a location» give the path defined in step (1), (ex c:\temp\), then click on the « **Next** ». Tap



6. Windows is ready to install the best driver. Click on the « **Next** ». Tap. Then select the « **Finish** » tap to complete the installation.



7. Removable drive(s) has been created on « My Computer ». The PNY USB device is ready.

